

Hepatocellular carcinoma: Advances in diagnostic imaging

Haoran Sun^{1,*}, Tianqiang Song²

¹ Department of Radiology, Tianjin Medical University Hospital, Tianjin, China.

² Department of Hepatobiliary Cancer, Tianjin Medical University Cancer Institute and Hospital, Tianjin, China.

Summary

Thanks to the growing knowledge on biological behaviors of hepatocellular carcinomas (HCC), as well as continuous improvement in imaging techniques and experienced interpretation of imaging features of the nodules in cirrhotic liver, the detection and characterization of HCC has improved in the past decade. A number of practice guidelines for imaging diagnosis have been developed to reduce interpretation variability and standardize management of HCC, and they are constantly updated with advances in imaging techniques and evidence based data from clinical series. In this article, we strive to review the imaging techniques and the characteristic features of hepatocellular carcinoma associated with cirrhotic liver, with emphasis on the diagnostic value of advanced magnetic resonance imaging (MRI) techniques and utilization of hepatocyte-specific MRI contrast agents. We also briefly describe the concept of liver imaging reporting and data systems and discuss the consensus and controversy of major practice guidelines.

Keywords: Ultrasonography, tomography, X-Ray computed, magnetic resonance imaging, cirrhosis, diagnostic imaging, contrast media

1. Introduction

The common risk factors for hepatocellular carcinoma (HCC) are hepatitis B virus (HBV) or hepatitis C virus (HCV) infection and alcoholic liver disease. Less common causes include nonalcoholic fatty liver, hereditary hemochromatosis, autoimmune hepatitis, alpha-1 antitrypsin deficiency and Wilson disease, some porphyria and schistosomiasis (1). These risk factors can lead to remodel of texture with fibrotic progression of hepatic parenchyma. In patients with cirrhosis, the 5 year cumulative occurrence of HCC is between 5-30% depending on the causes of the disease, and associated cirrhosis is seen in 80-90% of patients with HCC (2,3). Due to the growing population of obesity and other metabolic syndromes, there is an increasing incidence of HCC due to non-alcoholic fatty infiltration liver disease; the incidence of HCC continues to grow in spite of the hepatitis B and C viruses' infection being prevented by the development of vaccines and anti-viral therapies (4,5). The fact that the classic imaging features

could yield a definite diagnosis and the probability of needle track seeding are limiting the necessity of liver biopsy (6). Therefore, HCC is the unique malignancy to be diagnosed by diagnostic imaging, exempting the necessity of a needle biopsy (7).

Since imaging plays a decisive role in the diagnosis of HCC, it is critical that imaging examination might be performed according to generalized protocols (including the types of equipment, scanning parameters, administration of contrast agents and timing of acquisition) and the imaging findings might be interpreted and reported following a standardized terminology and categorization.

2. Imaging modalities of HCC

2.1. Ultrasonography (US)

US is a non-invasive examination and has no ionic radiation on the human body. It remains inexpensive as well, which is recommended as the first choice for the screening and surveillance of HCC by the guidelines of almost all international societies (8). Patients who have risk factors for developing HCC should undergo US surveillance every 3 to 6 months (9). However, the sensitivity varies from 58% to 70% and is even poor for small HCC less than 1 cm (8-10). Classic findings of

*Address correspondence to:

Dr. Haoran Sun, Department of Radiology, Tianjin Medical University Hospital, Tianjin 300052, China.
E-mail: sunhaoran2006@hotmail.com

HCC include hypoechoic nodules or mixed echogenic nodules due to tumor necrosis or fatty metamorphosis or a surrounding thin hypoechoic band indicating a capsule which is characteristic for HCC. Colored doppler flow imaging may show hypervascularity and tumor vascular shunting (11). Contrast enhanced ultrasound (CEUS) with microbubble agents could reflect the real time dynamics of blood supply of the lesion, which is helpful in both detection and characterization of HCCs (12,13).

2.2. Multi-phasic enhanced computed tomography

Multi-phasic enhanced computed tomography (CT) is the most common choice for the diagnosis of HCC. In the past decade, technical advances in CT scanners have yielded considerably faster acquisition time and a dramatically dropped radiation dose. There are technical requirements on the equipment and scanning parameters: at least 8 rows multi detector CT for fast acquisition, scanning with thin collimation not over 5mm, adequate amount of contrast medium used and a bolus injection rate over 3 mL/s (14). Accurate timing is critical, at least three phases should be acquired after administration of iodinated contrast agents, namely hepatic arterial phase, portal venous phase and delayed phase (15). Precontrast CT is suggested to provide a baseline to demonstrate the level of enhancement, and it may provide information on existence of fat content, iron, calcification, hemorrhage, and iodized oil after transarterial chemoembolization (TACE) treatment (16). The arterial phase is a time range with the hepatic artery fully enhanced while hepatic veins are not enhanced yet, it could be divided into early and subsequently late hepatic arterial phase (17). Late hepatic arterial phase is strongly recommended, because the hyperenhancement in HCC is more predominant in the late than the early arterial phase, and a majority of HCCs may show hyperenhancement only in the late hepatic arterial phase (18,19). Portal venous phase is acquired in which the images have the following characteristics: Portal veins and hepatic parenchyma are maximally enhanced, and hepatic veins are enhanced by antegrade flow as well (20). Delayed phase should be acquired at least 3 minutes after the initial of injection when liver parenchyma is less enhanced than in portal venous phase (21). The advantage of CT also affords the ability to perform three-dimensional reconstructions that may help with preoperative planning which is superior to MRI. Due to possible complications such as radiation, contrast media leaking, allergic reaction and contrast induced nephropathy, CT is not a choice of repeated surveillance (22).

2.3. Magnetic resonance imaging (MRI)

MRI is superior in both detection and characterization of HCC and is continuing to improve its performance

and capability. The sensitivity and the specificity of MRI are reported at 91% and 95% as compared to 81% and 93% with MDCT (23). The standardized imaging protocol includes T2-weighted sequences to reveal the lesion in high resolution anatomic details, pre-contrast and multi-phasic enhanced 3D T1-weighted gradient echo sequences, and chemical shift in/opposed phase imaging which is sensitive to lipid content (23,24). The protocol of contrast examination is similar to contrast CT, and both early and late hepatic arterial phase might be acquired without fear of ionic radiation (25). The functional imaging is an added advantage of MRI. Among functional imaging techniques, diffusion weighted imaging (DWI) is the most promising method, it is based on differences of Brownian motion (diffusion) of water molecules within tissues in vivo. For tissues with increased cellularity and destroyed cell integrity such as malignancy, the diffusion of water molecules is restricted, which shows altered signal intensity and parametric changes on DWI (26). DWI is useful for detecting small HCC and differentiating compared to benign entities, however, it is not as robust and stable in image quality as T1WI and T2WI sequences and the positive predicting value and negative predicting value are controversial (Figure 1) (27,28). Currently, DWI is suggested but not required in most of the institutes.

The contrast medium commonly used for MRI is non-specific gadolinium-based contrast agents, however, hepatocyte specific contrast agents are promising in both detection and characterization of HCC (29). Among of several commercially available contrast agents, gadoxetate dimeglumine is a newer agent which enables both dynamic contrast and hepatocyte specific imaging with one administration (30). Approximately half of the agent is taken up by hepatocytes and excreted into the bile in about 20 min after routine contrast imaging, which is called hepatobiliary phase (30). Typically, HCCs appear hypointense in hepatobiliary phase because of lack of normal hepatocytes, which is a main feature for differentiating HCC from both regenerative nodules and dysplastic nodules which appear isointense

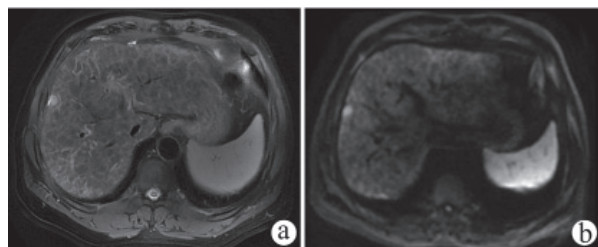


Figure 1. MRI feature of a small HCC associated with liver cirrhosis. (a) A moderate hyperintense nodule was revealed on fast suppressed T2WI sequence in the right margin, many small hypointense nodules could be seen in the background parenchyma suggesting the existence of cirrhosis. **(b)** The small HCC demonstrate remarkably hyperintense on diffusion weighted images, suggesting restriction of water molecule movement in the tumor.

(Figure 2) (31,32). However, about 10% of HCCs appear hyperintense compared to background parenchyma in hepatobiliary phase, because of overexpression of organic anion transporter peptide (OATP) proteins that are responsible for the transportation and uptake of the agent (33). Gadoxetate dimeglumine has proved its value in distinguishing small HCCs. The major limitation of the agent is lack of pure delayed phase, because the early uptake of the agent in delayed phase might superimpose true delayed enhancement, as a consequence, it might obscure the capsule which is diagnostic for HCC, the accumulation of the agent in the delayed phase might likewise mimic a tumor which is characteristic of delayed enhancement such as cholangiocarcinoma (34). Until now, in North America and European countries, gadoxetate dimeglumine is not widely used as compared to its use in East Asia (35,36).

3. Characteristics features of HCC

Cirrhotic nodules include regenerative nodules (RN), low-grade dysplastic nodules (LGDN), high-grade dysplastic nodules (HGDN), and HCCs (37). While the imaging modalities have greatly evolved and the detection rate of liver nodules has increased in the past decade, characterization of atypical hyperplastic/dysplastic nodules with small HCCs are still challenging (38). The following features are characteristic for HCC, the combination of these features could yield a definite diagnosis in most cases.

3.1. Cirrhotic liver background

In developing countries, many cirrhotic patients are unaware of their diseased condition until

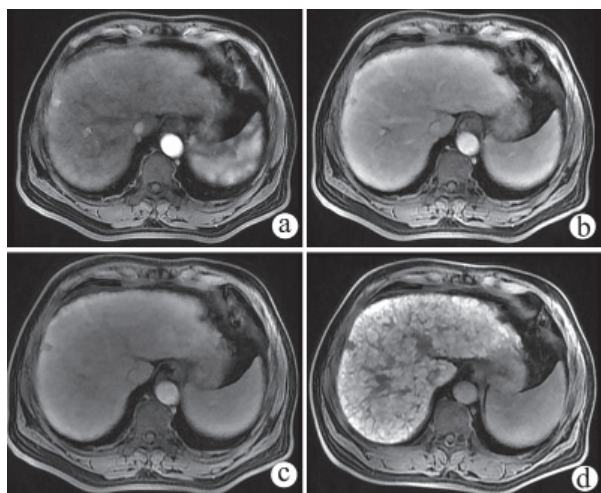


Figure 2. Gadoxetate dimeglumine enhanced T1 weighted MR imaging of a small HCC (the same case as in Figure 1). (a) The nodule shows remarkable hyperenhancement in arterial phase. (b) Rapid washout was observed in portal venous phase. (c) The nodule showed low intensity in delayed phase. (d) There was no uptake in the nodule in hepatobiliary phase.

developing advanced HCC or liver decompensation or gastrointestinal bleeding, so the radiologist also need to determine the associated cirrhosis in the absence of clinical data (39). Therefore, the judgment of liver cirrhosis might also take part in the differential diagnosis of hepatic nodules. The presence of nodular liver contour, atrophy of right lobe and medial segment of left lobe, enlarged caudate lobe and lateral segment of left lobe, widened fissures, heterogeneity of parenchyma with fibrotic and fatty changes, varices, ascites and splenomegaly are indicative of cirrhotic liver (Figure 3a) (40). Because many benign entities such as cysts and hemangiomas may present with atypical appearance in cirrhotic liver background, the judgment of cirrhosis helps to distinguishing HCC and benign nodules (41).

3.2. Hypoattenuation and moderate T1hypointense/T2 hyperintensity

The classical imaging characteristics of HCC are hypoattenuation on precontrast CT and hypointense on T1-weighted images and moderately hyperintense on T2-weighted images (42). Low T1 and high T2 intensity represents increased water proton density in the tissue, which is caused by cytotoxic edema, tumor necrosis and hypervascularity (Figure 1a) (42). HCC with lower T1 signal and moderate higher signal is often recognized as poorly differentiated (43). High T1 intense represents the accumulation of starch, protein, or glycoprotein that is common in RNs and DNs, some of the high differentiation HCC can also have similar high intensity, and HCC with higher T1 intense suggests being well differentiated in classification of

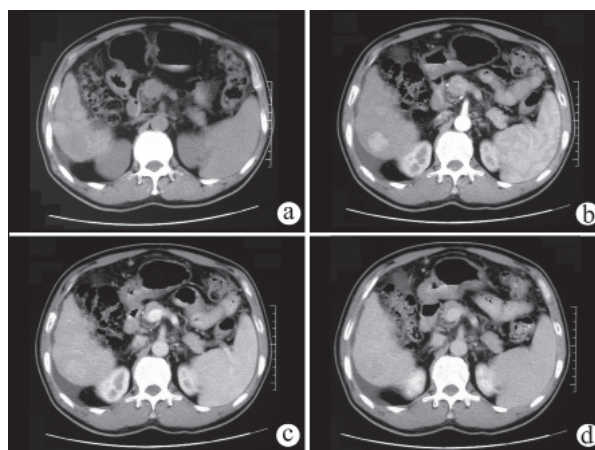


Figure 3. Multiphasic enhanced CT of a HCC associated with cirrhosis. (a) Precontrast CT showed a hypoattenuation nodule; while the nodular contour, parenchymal heterogeneity in attenuation, ascites and splenomegaly were indicative of cirrhosis. (b) In arterial phase, the nodule showed unequivocal hyperenhancement which had much higher enhancement than the adjacent background and precontrast baseline. (c) In portal venous phase, the nodule showed less enhancement but still higher than the background liver. (d) In delayed phase, the nodule demonstrated unequivocal washout which showed lower attenuation than the adjacent parenchyma.

which the prognosis is relatively good (44).

3.3. Arterial hyperenhancement and washout appearance

Arterial hyperenhancement is defined as more enhancement than liver parenchyma and higher attenuation/intensity in whole or in part of the lesion in the hepatic arterial phase compared to background liver. Washout is defined as an attenuation/intensity in whole or in part less than the earlier phase during the portal venous or delayed phase following the presence of arterial phase enhancement (45). If the lesion is surrounded by dense fibrosis then enhancement of the lesion should be compared to the comprehensive parenchyma. In some instances, delayed phase may be superior to portal venous phase for depicting washout appearance (Figures 3b-3d). Some HCC may show washout appearance only in the delayed phase (20). Neither arterial hyperenhancement or washout is characteristic of HCC, however, when combined together, the features are specific for HCC (46,47). A large nodule over 1.5-2 cm which appears to have hyperenhancement in the arterial phase and washout in the portal venous or delayed phase could be a diagnosis of HCC near 100% (48).

3.4. Fibrous capsule or pseudocapsule

The fibrous capsule of HCC consists of a dense fibrous tissue in the inner layer and a peripheral rim of sinusoids and small bile duct, while the pseudocapsule is made up of the dilated blood sinus and fibrous tissue around the tumor (49,50). Both fibrous capsule and pseudocapsule appear as slightly low signal on T1 and slightly high

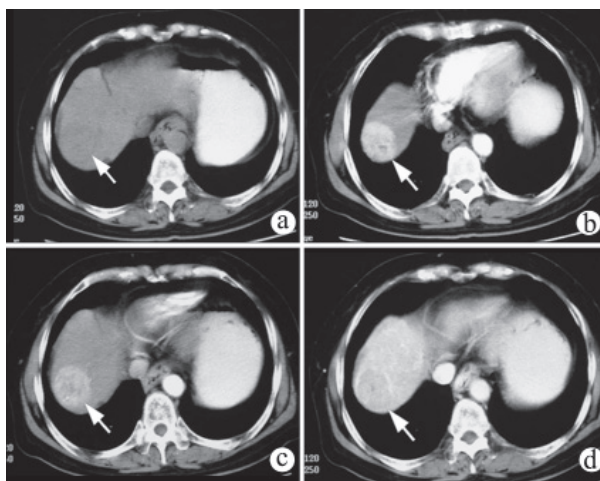


Figure 4. Capsule appearance of HCC (Arrow). (a) Precontrast CT showed an equivocal hypoattenuation nodule. (b) In early arterial phase, the nodule showed remarkable and heterogeneous hyperenhancement. (c) In late arterial phase, the nodule showed less enhancement but still higher than the background liver. (d) In portal venous phase, the nodule demonstrated unequivocal washout and a hyperattenuation ring was seen along margin of HCC namely capsule appearance.

signal on T2 (Figure 4), and show a discrete ring of hyperenhancement along margin of HCC in the portal venous phase or delayed phase, the enhancement usually increases from portal venous phase to delayed phases. Compared to the ring along the margin of regenerative nodules in surrounding liver, capsule appearance is thicker and more conspicuous (50). The capsule appearance is characteristic of HCCs, regardless of whether it is tumor capsule or pseudocapsule, and it is also reported to be capable of predicting HCC progression, while HCC with complete capsule lesions has lower recurrence rate after treatment than that of incomplete capsular counterparts, suggesting that the fibrous capsule may be able to prevent the spread of HCC (51,52).

3.5. Intratumoral lipid contents

Lipid content is often seen in HCCs of 1.5-3 cm in size, and occasionally seen in larger tumors (53). On CT examination, a mass may be demonstrated as having intratumoral fat if its attenuation is below 40 Hounsfield units (HU) (Figure 5a). Loss of signal intensity on the opposed-phase T1-weighted images is more sensitive to fat content than CT (Figure 5b) (54). HCC with lipid content often shows slow progression and relatively better prognosis (55). HCCs with intratumoral lipid content need to be differentiated from angioleiomyolipoma or liposarcoma which is rarely seen in cirrhotic liver.

3.6. Mosaic architecture

Mosaic architecture is used to describe appearance consisting of randomly distributed nodules with different appearances in attenuation/intensity and enhancement pattern; it also refers to lesions with internal enhancing septations (56). "Nodule-in-nodule" is a subtype of mosaic architecture, which is defined as the presence of a small nodule within a larger nodule or mass, the latter are often DN, especially for HGDN, and it reflects the growth pattern of HCC (Figure 6) (57). The internal nodule differs in enhancement or other

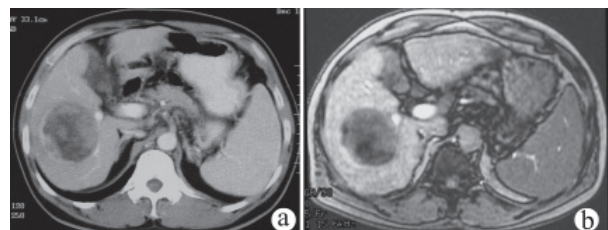


Figure 5. Intratumoral lipid contents in a masslike HCC. (a) Heterogeneous hypo-attenuation area (CT attenuation ranged from 25-38) in the mass on portal venous phase was indicative of intratumoral lipid. (b) Opposed phase imaging demonstrated obvious signal loss in the mass, which was specific for lipid content.

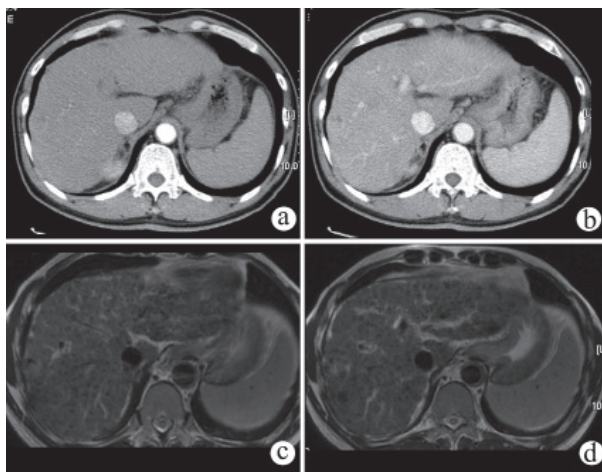


Figure 6. Nodule in nodule appearance in a cirrhotic liver. A heterogeneous enhanced nodule in arterial phase (a) and portal venous phase (b). CT could be seen adjacent to the right margin of the liver. (c and d) On T2WI sequence, the majority of nodules showed iso- and hypo- intense, there was a smaller nodule with moderately high T2 intense in the center of bigger nodule, histopathological findings had proved it was a small HCC in a high grade dysplastic nodule (HGDN).

features from the larger nodule. Mosaic architecture is a characteristic feature of HCCs (56).

3.7. Hemorrhage

Hemorrhage refers to presence of intra-tumoral or peritumoral blood products in absence of biopsy, trauma or local-regional treatment, it is an ancillary feature favoring HCC (58). On precontrast CT, hemorrhage could manifest as a heterogeneous hyper-attenuation area, but MRI is more sensitive and specific for detection of blood products than CT (Figure 7). On MRI, blood products usually manifest as areas of heterogeneous high T1 signal intensity and low T2 signal intensity due to T2* shortening (59).

3.8. Tumoral thrombus

Tumoral thrombus is defined when definite enhanced soft tissue is seen in the lumen of portal or hepatic vein. Vein occlusion with arterial phase hyperenhancement and washout within the lumen, lumen expanding, ill-defined walls and arterioles within lumen of vein are suggestive of tumor thrombus (Figure 8) (60). Comparatively, non-tumoral thrombus does not enhance and usually does not expand lumen to the same degree as tumor in vein (61). Tumor thrombus is a diagnostic feature of HCCs (61,62).

4. Imaging-based guidelines of HCC

Currently, there are at least 18 practice guidelines for the diagnosis and management of HCC since 2001. They are: Barcelona (BCLC) staging system; guideline 2010 from American Association for the Study of Liver Disease (AASLD); guideline from European

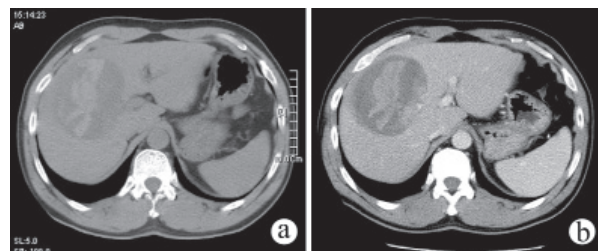


Figure 7. Intratumoral hemorrhage in a poorly differentiated HCC. 48-year-old man with sudden abdominal pain and history of hepatitis B virus infection. US revealed a mixed hyperechogenicity mass in right lobe. (a) Precontrast CT showed a heterogeneous mass with irregular hyperattenuation in the central area. (b) Contrast CT demonstrated no enhancement in either hyperattenuation area or the majority of hypoattenuation area which were proved to be blood products in different stages, a small portion of soft tissue with moderate enhancement could be seen in the left margin on portal venous phase, which proved to be poorly differentiated HCC with intratumoral hemorrhage.

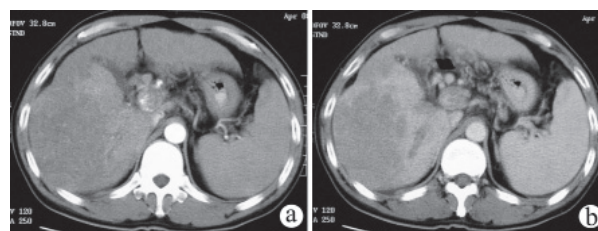


Figure 8. Tumoral thrombus in portal vein from a masslike HCC. (a) Hyperenhancement and arterial lumen could be seen in the expanded but occluded portal vein lumen in arterial phase. (b) Rapid washout in vein could be seen in portal venous phase, no antegrade blood flow could be found in branches of the portal vein. A definite diagnosis of HCC with portal vein invasion could be made for the irregular mass in right lobe.

Association for the Study of Liver Disease (EASLD) updated in 2012; guideline from Asian Pacific Association for the Study of Liver Disease (APASL) in 2010, Japan Society of Hepatology (JSH) guideline 2014 and guideline from Korean Liver Cancer Study Group (KLCSG) in 2014 (9,62-66). These guidelines were developed to standardize the diagnosis of HCC mainly from the scope of clinical management. In 2011, Liver Imaging Reporting and Data System (LI-RADS) was proposed by American College of Radiology from a committee of radiologists, physicians, surgeons, pathologists and interventional radiologists (67).

LI-RADS is a system with a view of diagnostic imaging to provide standardized terminology and criteria for interpreting and reporting findings of CT and MRI in patients with cirrhosis or risk factors for HCC, which will help referring physicians to understand radiologic reports. It has been updated in 2013 and 2014 based on feedbacks from practice (67). The lexicon term "Observation" is used in the categorization instead of lesion or nodule, because observation might either be a histopathologically true lesion, perfusion alteration or artifacts. The features of arterial hyperenhancement and washout with size combination, capsule appearance

and interval growth are ancillary findings. LI-RADS categorizes radiological findings into five categorizations ranging from definitely benign to definitely HCC (Table 1) (67). LI-RADS is applied only for patients with cirrhosis or at high risk of HCC. Although it has more in common with AASLD compared to other guidelines, LI-RADS classified the "Indeterminate" category into probably benign, intermediate probability for HCC and probably HCC (LR 2, 3 and 4) to facilitate categorizing and reporting, especially for small nodules between 10 mm and 20 mm (9,67).

Because of the etiology, the incidence rate as well as treatment policies are different among international societies, and there is lack of consensus in the imaging techniques, diagnostic criteria, staging and treatment of

HCCs. Some of the guidelines aim to enable ultimate specificity while others try to achieve higher sensitivity. The diagnostic strategies are different among LI-RADS and other clinical practice guidelines on several aspects: the application of CEUS in detection and characterizing of HCC, the application of specific imaging techniques of CT and MRI, the role of hepatocyte specific contrast agents, the diagnostic criteria of atypical HCC such as hypovascular HCC, diagnosis and management toward very small HCC, and the differential diagnostic spectrum of malignances other than HCC (68-70). Table 2 summarizes the controversies of the diagnostic strategy among major practice guidelines toward HCC.

In summary, with the growing knowledge of behavior of HCC, and the continuous improvement in

Table 1. Categories of LI-RADS v2014

LI-RADS	Category	Concept and definition
LR-1	Definitely benign	<i>Concept:</i> 100% certainty observation is benign. <i>Definition:</i> Observation with imaging features diagnostic of a benign entity, or definite disappearance at follow up in absence of treatment.
LR-2	Probably benign	<i>Concept:</i> High probability observation is benign. <i>Definition:</i> Observation with imaging features suggestive but not diagnostic of a benign entity.
LR-3	Intermediate probability for HCC	<i>Concept:</i> Both HCC and benign entity have moderate probability. <i>Definition:</i> Observation that does not meet criteria for other LI-RADS categories.
LR-4	Probably HCC	<i>Concept:</i> High probability observation is HCC but there is not 100% certainty. <i>Definition:</i> Observation with imaging features suggestive but not diagnostic of HCC.
LR-5*	Definitely HCC	<i>Concept:</i> 100% certainty observation is HCC. <i>Definition:</i> Observation with imaging features diagnostic of HCC or proven to be HCC at histology.
LR-5V	Definitely HCC with tumor in vein	<i>Concept:</i> 100% certainty that observation is HCC invading vein. <i>Definition:</i> Observation with imaging features diagnostic of HCC invading vein.
LR-5T	Treated observation	<i>Concept:</i> A loco-regionally treated HCC. <i>Definition:</i> LR5A or 5B observation or biopsy-proven HCC lesion that has undergone loco-regional treatment.
LR-M	Other malinancy	<i>Concept:</i> High probability that observation is a malignancy other than HCC. <i>Definition:</i> Observation with features suggestive of non-HCC malignancy.

*LR-5g, if there is $\geq 50\%$ diameter increase in ≤ 6 months. *LR-5us, if there is both "washout" and visibility as discrete nodules at antecedent surveillance ultrasound. Modified from the original table from American College of Radiology. Liver Imaging Reporting and Data System. <http://www.acr.org/Quality-Safety/Resources/LIRADS.html>

Table 2. Major difference on the diagnosis of HCC among six major practice guidelines

Items	AASLD 2010	EASLD 2012	APASL 2010	JSH 2014	KLCSG 2014	LI-RADS 2014
Contrast enhanced ultrasonography	N	N*	Y	Y	Y	N
Angiographic assisted CTA/CTAP	N	N	N	Y	N	N
Inclusion of small HCC < 1.0 cm	N	N	Y	Y	Y	N
Diffusion weighted Imaging	N	N	N	N	N	Y
Hepatocyte specific contrast imaging	N	N	Y	Y	Y	Y
Criteria for hypovascular HCC	N	N	Y	Y	N	Y
Consideration of other malignances	N	N	N	N	N	Y

Y: agreed, included or recommended; N: disagreed, excluded or declined. *EASLD considers contrast enhanced ultrasonography to be used with caution.

imaging techniques and evidence-based interpretation in cirrhotic liver, the detection and characterization of HCC has improved in the past decade. Besides dynamic enhanced US/CT/MRI, hepatocyte-specific imaging and DWI are showing their potential for diagnosis of early HCCs. A number of practice guidelines for the imaging diagnosis have been developed to reduce interpretation variability and to help standardize management of HCC, and they are constantly updated with advances in imaging techniques and better understanding of features from clinical data.

References

- Llovet JM, Burroughs A, Bruix J. Hepatocellular carcinoma. *Lancet*. 2003; 362:1907-1917.
- Bodzin AS, Busuttill RW. Hepatocellular carcinoma: Advances in diagnosis, management, and long term outcome. *World J Hepatol*. 2015; 7:1157-1167.
- Watanabe A, Ramalho M, AlObaidy M, *et al*. Magnetic resonance imaging of the cirrhotic liver: An Update. *World J Hepatol*. 2015; 7:468-487.
- Di Martino M, Saba L, Bosco S, *et al*. Hepatocellular carcinoma (HCC) in non-cirrhotic liver: Clinical, radiological and pathological findings. *Eur Radiol*. 2014; 24:1446-1454.
- Szklaruk J, Silverman PM, Charnsangavej C. Imaging in the diagnosis, staging, treatment, and surveillance of hepatocellular carcinoma. *Am J Roentgenol*. 2003; 180:441-454.
- Silva MA, Hegab B, Hyde C, *et al*. Needle track seeding following biopsy of liver lesions in the diagnosis of hepatocellular cancer: A systematic review and meta-analysis. *Gut*. 2008; 57:1592-1596.
- Sherman M. The radiological diagnosis of hepatocellular carcinoma. *Am J Gastroenterol*. 2010; 105:610-612.
- Maida M, Orlando E, Cammà C, Cabibbo G. Staging systems of hepatocellular carcinoma: A review of literature. *World J Gastroenterol*. 2014; 20:4141-4150.
- Bruix J, Sherman M. American Association for the Study of Liver Diseases. Management of hepatocellular carcinoma: An update. *Hepatology*. 2011; 53:1020-1022.
- Yu NC, Chaudhari V, Raman SS, *et al*. CT and MRI improve detection of hepatocellular carcinoma, compared with ultrasound alone, in patients with cirrhosis. *Clin Gastroenterol Hepatol*. 2011; 9:161-167.
- Lencioni R, Mascalchi M, Caramella D, Bartolozzi C. Small hepatocellular carcinoma: Differentiation from adenomatous hyperplasia with color Doppler US and dynamic Gd-DTPA-enhanced MR imaging. *Abdom Imaging*. 1996; 21:41-48.
- Sugimoto K, Moriyasu F, Kamiyama N, Yamada M, Lijima H. Correlation between parametric imaging using contrast ultrasound and the histological differentiation of hepatocellular carcinoma. *Hepatol Res*. 2008; 38:273-280.
- Liu GJ, Xu HX, Lu MD, *et al*. Correlation between enhancement pattern of hepatocellular carcinoma on real-time contrast-enhanced ultrasound and tumour cellular differentiation on histopathology. *Br J Radiol*. 2007; 80:321-330.
- Luca A, Caruso S, Milazzo M, *et al*. Multidetector-row computed tomography (MDCT) for the diagnosis of hepatocellular carcinoma in cirrhotic candidates for liver transplantation: Prevalence of radiological vascular patterns and histological correlation with liver explants. *Eur Radiol*. 2010; 20:898-907.
- Honda H, Tajima T, Kajiyama K, *et al*. Vascular changes in hepatocellular carcinoma: Correlation of radiologic and pathologic findings. *AJR Am J Roentgenol*. 1999; 173:1213-1217.
- Doyle DJ, O'Malley ME, Jang HJ, Jhaveri K. Value of the unenhanced phase for detection of hepatocellular carcinomas 3 cm or less when performing multiphase computed tomography in patients with cirrhosis. *J Comput Assist Tomogr*. 2007; 31:86-92.
- Asayama Y, Yoshimitsu K, Nishihara Y, *et al*. Arterial blood supply of hepatocellular carcinoma and histologic grading: Radiologic-pathologic correlation. *AJR Am J Roentgenol*. 2008; 190:W28-34.
- Marrero JA, Hussain HK, Nghiem HV, *et al*. Improving the prediction of hepatocellular carcinoma in cirrhotic patients with an arterially-enhancing liver mass. *Liver Transpl*. 2005; 11:281-289.
- Yoon SH, Lee JM, So YH, *et al*. Multiphasic MDCT enhancement pattern of hepatocellular carcinoma smaller than 3 cm in diameter: Tumor size and cellular differentiation. *AJR Am J Roentgenol*. 2009; 193:W482-489.
- Furlan A, Marin D, Vanzulli A, *et al*. Hepatocellular carcinoma in cirrhotic patients at multidetector CT: Hepatic venous phase versus delayed phase for the detection of tumour washout. *Br J Radiol*. 2011; 84:403-412.
- Iannaccone R, Laghi A, Catalano C, *et al*. Hepatocellular carcinoma: Role of unenhanced and delayed phase multi-detector row helical CT in patients with cirrhosis. *Radiology*. 2005; 234:460-467.
- Barrett BJ, Parfrey PS. Clinical practice. Preventing nephropathy induced by contrast medium. *N Engl J Med*. 2006; 354:379-386.
- Chou R, Cuevas C, Fu R, *et al*. Imaging Techniques for the Diagnosis of Hepatocellular Carcinoma: A Systematic Review and Meta-analysis. *Ann Intern Med*. 2015; 162:697-711.
- Willatt JM, Hussain HK, Adusumilli S, Marrero JA. MR imaging of hepatocellular carcinoma in the cirrhotic liver: Challenges and controversies. *Radiology*. 2008; 247:311-330.
- Yu JS, Kim KW, Kim EK, Lee JT, Yoo HS. Contrast enhancement of small hepatocellular carcinoma: Usefulness of three successive early image acquisitions during multiphase dynamic MR imaging. *AJR Am J Roentgenol*. 1999; 173:597-604.
- Nasu K, Kuroki Y, Tsukamoto T, *et al*. Diffusion-weighted imaging of surgically resected hepatocellular carcinoma: Imaging characteristics and relationship among signal intensity, apparent diffusion coefficient, and histopathologic grade. *AJR Am J Roentgenol*. 2009; 193:438-444.
- Nishie A, Tajima T, Asayama Y, *et al*. Diagnostic performance of apparent diffusion coefficient for predicting histological grade of hepatocellular carcinoma. *Eur J Radiol*. 2011; 80:e29-e33.
- Davenport MS, Khalatbari S, Liu PS, *et al*. Repeatability of diagnostic features and scoring systems for hepatocellular carcinoma by using MR Imaging. *Radiology*. 2014; 272:132-142.
- Park HS, Lee JM, Kim SH, *et al*. Differentiation of well-

- differentiated hepatocellular carcinomas from other hepatocellular nodules in cirrhotic liver: Value of SPIO-enhanced MR imaging at 3.0 Tesla. *J Magn Reson Imaging*. 2009; 29:328-335.
30. Kitao A, Matsui O, Yoneda N, *et al.* The uptake transporter OATP8 expression decreases during multistep hepatocarcinogenesis: Correlation with gadoxetic acid enhanced MR imaging. *Eur Radiol*. 2011; 21:2056-2066.
 31. Ichikawa T, Saito K, Yoshioka N, *et al.* Detection and characterization of focal liver lesions: A Japanese phase III, multicenter comparison between gadoxetic acid disodium-enhanced magnetic resonance imaging and contrast-enhanced computed tomography predominantly in patients with hepatocellular carcinoma and chronic liver disease. *Invest Radiol*. 2010; 45:133-141.
 32. Park MJ, Kim YK, Lee MW, *et al.* Small hepatocellular carcinomas: Improved sensitivity by combining gadoxetic acid-enhanced and diffusion-weighted MR imaging patterns. *Radiology*. 2012; 264:761-770.
 33. Kim JY, Kim MJ, Kim KA, Jeong HT, Park YN. Hyperintense HCC on hepatobiliary phase images of gadoxetic acid-enhanced MRI: Correlation with clinical and pathological features. *Eur J Radiol*. 2012; 81:3877-3882.
 34. Rimola J, Forner A, Reig M, *et al.* Cholangiocarcinoma in cirrhosis: Absence of contrast washout in delayed phases by magnetic resonance imaging avoids misdiagnosis of hepatocellular carcinoma. *Hepatology*. 2009; 50:791-798.
 35. Kim TK, Lee KH, Jang HJ, *et al.* Analysis of gadobenate dimeglumine-enhanced MR findings for characterizing small (1-2-cm) hepatic nodules in patients at high risk for hepatocellular carcinoma. *Radiology*. 2011; 259:730-738.
 36. Granito A, Galassi M, Piscaglia F, *et al.* Impact of gadoxetic acid (Gd-EOB-DTPA)-enhanced magnetic resonance on the non-invasive diagnosis of small hepatocellular carcinoma: A prospective study. *Aliment Pharmacol Ther*. 2013; 37:355-363.
 37. Amano S, Ebara M, Yajima T, *et al.* Assessment of cancer cell differentiation in small hepatocellular carcinoma by computed tomography and magnetic resonance imaging. *J Gastroenterol Hepatol*. 2003; 18:273-279.
 38. Parente DB, Perez RM, Eiras-Araujo A, *et al.* MR imaging of hypervascular lesions in the cirrhotic liver: A diagnostic dilemma. *Radiographics*. 2012; 32:767-787.
 39. Rao PN. Nodule in liver: Investigations, differential diagnosis and follow-up. *J Clin Exp Hepatol*. 2014; 4:S57-62.
 40. Hanna RF, Aguirre DA, Kased N, *et al.* Cirrhosis-associated hepatocellular nodules: Correlation of histopathologic and MR imaging features. *Radiographics*. 2008; 28:747-769.
 41. Jha RC, Mitchell DG, Weinreb JC, *et al.* LI-RADS categorization of benign and likely benign findings in patients at risk of hepatocellular carcinoma: A pictorial atlas. *Am J Roentgenol*. 2014; 203:W48-W69.
 42. Kelekis NL, Semelka RC, Worawattanakul S, *et al.* Hepatocellular carcinoma in North America: A multiinstitutional study of appearance on T1-weighted, T2-weighted, and serial gadolinium-enhanced gradient-echo images. *AJR Am J Roentgenol*. 1998; 170:1005-1013.
 43. Shinmura R, Matsui O, Kobayashi S, *et al.* Cirrhotic nodules: Association between MR imaging signal intensity and intranodular blood supply. *Radiology*. 2005; 237:512-519.
 44. Ebara M, Fukuda H, Kojima Y, *et al.* Small hepatocellular carcinoma: Relationship of signal intensity to histopathologic findings and metal content of the tumor and surrounding hepatic parenchyma. *Radiology*. 1999; 210:81-88.
 45. Cereser L, Furlan A, Bagatto D, *et al.* Comparison of portal venous and delayed phases of gadolinium-enhanced magnetic resonance imaging study of cirrhotic liver for the detection of contrast washout of hypervascular hepatocellular carcinoma. *J Comput Assist Tomogr*. 2010; 34:706-711.
 46. Lin MT, Chen CL, Wang CC, *et al.* Diagnostic sensitivity of hepatocellular carcinoma imaging and its application to non-cirrhotic patients. *J Gastroenterol Hepatol*. 2011; 26:745-750.
 47. Song P, Tang W, Hasegawa K, Kokudo N. Systematic evidence-based clinical practice guidelines are ushering in a new stage of standardized management of hepatocellular carcinoma in Japan. *Drug Discov Ther*. 2014; 8:64-70.
 48. Forner A, Vilana R, Ayuso C, *et al.* Diagnosis of hepatic nodules 20 mm or smaller in cirrhosis: Prospective validation of the noninvasive diagnostic criteria for hepatocellular carcinoma. *Hepatology*. 2008; 47:97-104.
 49. Lim JH, Choi D, Park CK, Lee WJ, Lim HK. Encapsulated hepatocellular carcinoma: CT-pathologic correlations. *Eur Radiol*. 2006; 16:2326-2333.
 50. Ishigami K, Yoshimitsu K, Nishihara Y, *et al.* Hepatocellular carcinoma with a pseudocapsule on gadolinium-enhanced MR images: Correlation with histopathologic findings. *Radiology*. 2009; 250:435-443.
 51. Ishiguchi T, Shimamoto K, Fukatsu H, Yamakawa K, Ishigaki T. Radiologic diagnosis of hepatocellular carcinoma. *Semin Surg Oncol*. 1996; 12:164-169.
 52. Li CS, Chen RC, Tu HY, *et al.* Imaging well-differentiated hepatocellular carcinoma with dynamic triple-phase helical computed tomography. *Br J Radiol*. 2006; 79:659-665.
 53. Siripongsakun S, Lee JK, Raman SS, *et al.* MRI detection of intratumoral fat in hepatocellular carcinoma: Potential biomarker for a more favorable prognosis. *AJR Am J Roentgenol*. 2012; 199:1018-1025.
 54. Yu JS, Chung JJ, Kim JH, *et al.* Fat-containing nodules in the cirrhotic liver: Chemical shift MRI features and clinical implications. *AJR Am J Roentgenol*. 2007; 188:1009-1016.
 55. Balci NC, Befeler AS, Bieneman BK, *et al.* Fat containing HCC: Findings on CT and MRI including serial contrast-enhanced imaging. *Acad Radiol*. 2009; 16:963-968.
 56. Huh J, Kim KW, Kim J, Yu E. Pathology-MRI correlation of hepatocarcinogenesis: Recent update. *J Pathol Transl Med*. 2015; 49:218-229.
 57. Sadek AG, Mitchell DG, Siegelman ES, *et al.* Early hepatocellular carcinoma that develops within macroregenerative nodules: Growth rate depicted at serial MR imaging. *Radiology*. 1995; 195:753-756.
 58. Oishi K, Itamoto T, Amano H, *et al.* Clinicopathologic features of poorly differentiated hepatocellular carcinoma. *J Surg Oncol*. 2007; 95:311-316.
 59. Anis M. Imaging of hepatocellular carcinoma: New approaches to diagnosis. *Clin Liver Dis*. 2015; 19:325-340.
 60. Shah ZK, McKernan MG, Hahn PF, Sahani DV. Enhancing and expansile portal vein thrombosis: Value in the diagnosis of hepatocellular carcinoma in patients with multiple hepatic lesions. *AJR Am J Roentgenol*. 2007;

- 188:1320-1323.
61. Tublin ME, Dodd GD 3rd, Baron RL. Benign and malignant portal vein thrombosis: Differentiation by CT characteristics. *AJR Am J Roentgenol.* 1997; 168:719-723.
 62. Bruix J, Sherman M, Llovet JM, *et al.* Clinical management of hepatocellular carcinoma. Conclusions of the Barcelona-2000 EASL conference. European Association for the Study of the Liver. *J Hepatol.* 2001; 35:421-430.
 63. Tan CH, Low SC, Thng CH. APASL and AASLD consensus guidelines on imaging diagnosis of hepatocellular carcinoma: A review. *Int J Hepatol.* 2011; 2011:519783.
 64. Leoni S, Piscaglia F, Golfieri R, *et al.* The impact of vascular and nonvascular findings on the noninvasive diagnosis of small hepatocellular carcinoma based on the EASL and AASLD criteria. *Am J Gastroenterol.* 2010; 105:599-609.
 65. Kokudo N, Makuuchi M. Evidence-based clinical practice guidelines for hepatocellular carcinoma in Japan: The J-HCC guidelines. *J Gastroenterol.* 2009; 44 (Suppl 19):119-121.
 66. Lee JM, Park JW, Choi BI. 2014 KLCSSG-NCC Korea Practice Guidelines for the management of hepatocellular carcinoma: HCC diagnostic algorithm. *Dig Dis.* 2014; 32:764-777.
 67. American College of Radiology. Liver Imaging Reporting and Data System version 2014. <http://www.acr.org/Quality-Safety/Resources/LIRADS> (accessed Nov 2014).
 68. Jang HJ, Yu H, Kim TK. Contrast-enhanced ultrasound in the detection and characterization of liver tumors. *Cancer Imaging.* 2009; 9:96-103.
 69. Quaia E. Microbubble ultrasound contrast agents: An update. *Eur Radiol.* 2007; 17:1995-2008.
 70. Hatanaka K, Kudo M, Minami Y, *et al.* Differential diagnosis of hepatic tumors: Value of contrast-enhanced harmonic sonography using the newly developed contrast agent, Sonazoid. *Intervirol.* 2008; 51 (Suppl 1):61-69.

(Received August 22, 2015; Accepted September 1, 2015)